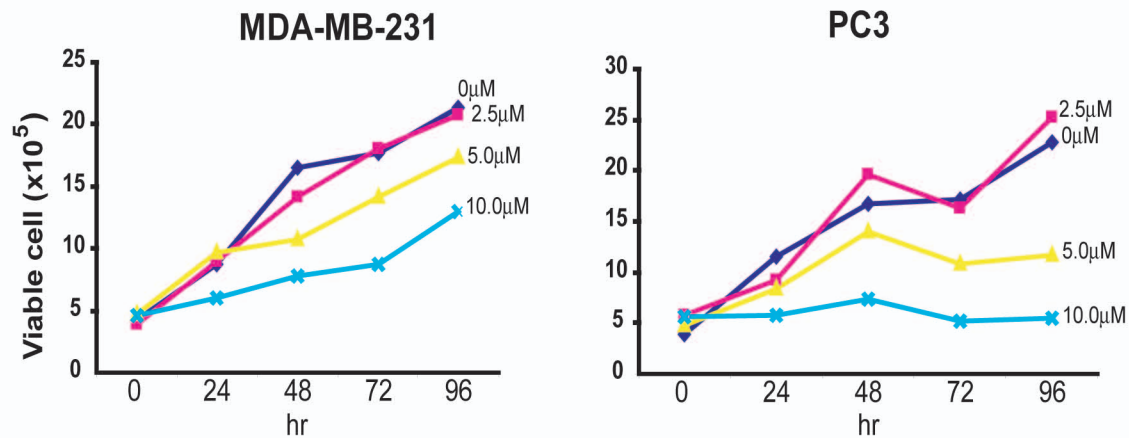


SUPPLEMENTARY INFORMATION

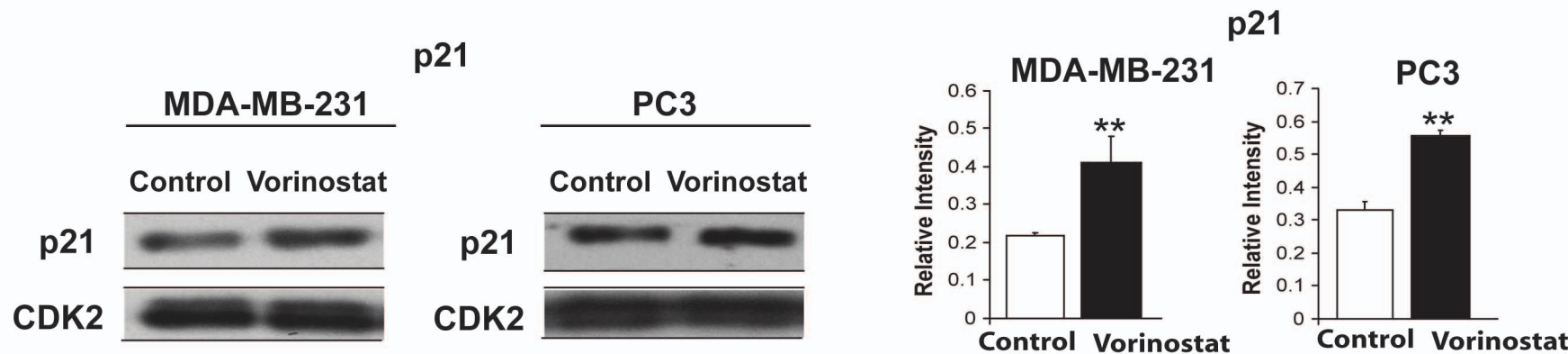
**Supplemental Table 1. Primer sequences for quantitative RT-PCR**

GENE	PRIMER
hIL8	Forward 5'-GTGCAGTTTTGCCAAGGAGT-3' Reverse 5'-CTCTGCACCCAGTTTTCTT-3'
hPTHrP	Forward 5'- ACCTCGGAGGTGTCCCCTAAC-3' Reverse 5'-TCAGACCCAAATCGGACGG-3'
hOC	Forward 5'-GGCAGCGAGGTAGTGAAGAG-3' Reverse 5'-CGATAGGCCTCCTGAAAGC-3'
hOP	Forward 5'- ACACATATGATGGCCGAGGT-3' Reverse 5'-ATGGCCTTGTATGCACCATT-3'
hVEGF	Forward 5'-AGTTAGTCACACT GGAGATTGAC-3' Reverse 5'-ATAGGATCGACAGTTGTAACC-3'
hP21	Forward 5'- GACTCTAGGGTCGAAAACG-3' Reverse 5'- GGATTAGGGCTTCCTCTTGG-3'
hGAPDH	Forward 5'- ATGTTTCGTCATGGGTGTGAA-3' Reverse 5'- TGTGGTCATGAGTCCTTCCA-3'
hMMP2	Forward 5'-ACGACGGCATCCAGGTTAT-3' Reverse 5'-TGATGTCCAGCGAGTGGAT-3'
mALKP	Forward 5'-TTGTGCGAGAGAAAGAGAGAGA-3' Reverse 5'-GTTTCAGGGCATTTTTCAAGGT-3'
mGAPDH	Forward 5'-AGGTCGGTGTGAACGGATTTG-3' Reverse 5'-TGTAGACCATGTAGTTGAGGTCA-3'
mTRAP	mm00475698_m1

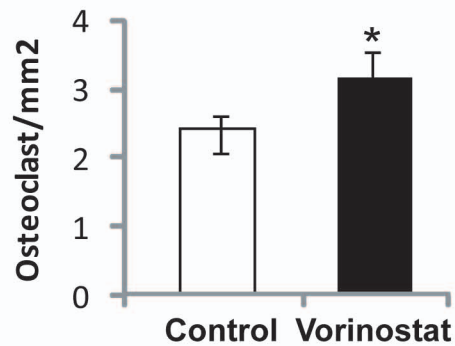
A.



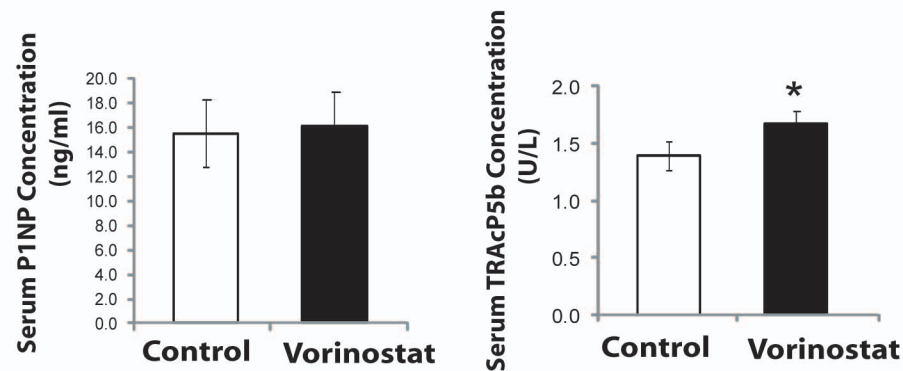
B.



C.



D.



### **Supplementary Figure S1**

(A) Cell viability of MDA-MB-231 breast cancer and PC3 prostate cancer cells exposed to various doses of vorinostat (0, 2.5, 5 and 10 $\mu$ M) for 96 h.

(B) Western blot showing p21 levels in whole cell lysates from MDA-MB-231 breast cancer and PC3 prostate cancer cells exposed to vorinostat (2.5 $\mu$ M) for 24h. Levels of cdk2 are used as internal loading controls. Graphs to the right of the western blots show quantitation of p21 protein levels relative to cdk2 levels (n=3, \*\* $P$ <0.005).

(C) Quantitation of osteoclast numbers recruited on total bone surface in non-tumor bearing animals treated with vorinostat or vehicle controls. (n=12, \* $P$ <0.1).

(D) Serum levels of Procollagen Type 1 amino terminal propeptide (P1NP), a marker for bone formation and tartrate resistant acid phosphatase 5b (TRAcP 5b), marker for bone resorption in the serum from tumor (PC3 cells) or tumor-free (shown in Fig. 5) animals treated with vorinostat or vehicle controls. \* $P$ <0.1(n=6).